

K57 Family of FlatScreens

User Guide

Version 2.2, January 1999

Copyright © 1998 Keycorp Limited

Document 903-MA-0011

All Rights Reserved

Keycorp is a trademark of Keycorp Limited

Disclaimer

All material contained in this document is furnished pursuant to the terms and conditions of a duly executed Program Product Licence ('Licence') and/or a duly executed Agreement to Purchase or Lease Equipment ('Agreement').

All terms, conditions, warranties, undertakings, inducements or representations, whether express, implied, statutory or otherwise, relating in any way to the products the subject of the Licence and/or the Agreement are excluded, other than:

1. terms, conditions or warranties expressly provided for in the Licence and/or the Agreement; and
2. terms, conditions or warranties implied by any Act of Parliament which may not be excluded provided that Keycorp's liability for any breach of any such term, condition or warranty shall, subject to the Licence and/or Agreement, be limited at the option of Keycorp to any one or more of the following:
 - (a) if the breach relates to goods:
 - (i) the replacement of the goods or the supply of the equivalent goods;
 - (ii) the repair of the goods;
 - (iii) the payment of the cost of replacing the goods or of acquiring equivalent goods; or
 - (iv) the payment of the costs of having the goods repaired; and
 - (b) if the breach relates to services:
 - (i) the supplying of the services again; or
 - (ii) the payment of the cost of having the services supplied again.

Without limiting the generality hereof, Keycorp shall not be under any liability to any person in respect of any loss or damage, including consequential loss or damage and however caused, which may be suffered or incurred or which may arise directly or indirectly from the use of the material contained in this document or any other material furnished pursuant to the Licence and/or the Agreement.

All the users of the material contained in this document or any other material furnished pursuant to the Licence and/or the Agreement should ensure that the material is used in compliance with the laws, rules and regulations of the jurisdictions in which the material is used.

The material contained within is subject to change without notice and Keycorp may issue revised documents containing any such changes.

The statement below is included in this document to comply with a regulation of the Federal Communications Commission (FCC), an agency of the United States Government, and applies to computing equipment installed in the United States of America. Keycorp is taking appropriate steps to ensure compliance with relevant FCC regulations and similar regulations of other jurisdictions.

The 'K' symbol is a trademark of Keycorp Limited.

Microsoft, MS, MS-DOS, Windows, Windows NT, and the Windows logo are either registered trademarks or trademarks of Microsoft Corporation in the United States of America and/or other countries.

All other companies and product names are trademarks or registered trademarks of their respective holders.

Contents

Introduction	1
K57 FlatScreen Components	4
K57 PCI Card	5
LCD Panel	5
FlatScreen Terminator Board.....	5
Analogue CRT Interface	5
Power Pack	6
Installing the K57	7
In this Chapter.....	7
Equipment Checklist.....	7
Installing the K57 PCI Card in your PC	8
Installing Operating System Drivers for the K57	9
DOS.....	9
Installing TouchScreen Driver for DOS (K57T only).....	9
Windows 3.1x	10
Driver Resolutions Supported	11
Installing TouchScreen Driver for Win3.1x (K57T only)..	14
Windows 95	15
Driver Resolutions Supported	20
Installing MonitorMouse for Win95/98 (K57T only)	21
Windows NT 3.51	23
Driver Resolutions Supported	26
Installing “MonitorMouse for WinNT” (K57T only)	26
Windows NT 4.0.....	27
Driver Resolutions Supported	31
Installing MonitorMouse for WinNT (K57T only).....	31
OS2.....	32
Driver Resolution Supported.....	32
Using the K57 FlatScreens	33
Using the K57 Utilities	34
CT	34
SM.....	34

FP	34
Specifications	35
Troubleshooting	36
Glossary	37
Declaration of Conformity	38

Introduction

The K57 FlatScreen monitors are available in three screen sizes of 10.4in, 12.1in, and 14.5in with three housing styles. The K57 FlatScreens three housing styles are shown below.



Figure 1. K57 FlatScreen Family.

Described from left to right is the 10.4in height adjustable monitor, 12.1in ergonomic arm, and the 14.5in monitor with a swivel base. (Note: the 10.4in monitor with ergonomic arm is not shown.) Each size monitor is available with a swivel base which can be turned to share information with other users. The 10.4in and 12.1in monitors with a height adjustable stand are designed to enable the monitor to be raised or lowered to the optimum viewing height. The 10.4in monitor with the ergonomic arm is designed so you can lift the monitor clear of the desktop to free up the maximum space on the work surface.

All monitors in the K57 family support SVGA, VGA and DOS text modes and include a PCI based graphics card. An overview of the family includes:

- K57H-1221: 10.4' height adjustable monitor
- K57E-1221: 10.4' with an ergonomic arm
- K57H-1223: 12.1' height adjustable monitor
- K57S-1236: 14.5' swivel base only with added XVGA resolution
- K57T-1223: 12.1" standard with touch screen

A single cable carries both power and data between the 10.4' and 12.1' FlatScreens and the PC. The 14.5' XGA FlatScreen requires a power pack which is supplied with the FlatScreen, plugging into a moulding on the main cable of the FlatScreen. The K57T has an additional cable for connection to a serial port on the PC.

The three housing styles are pictured in detail, below and on the following page.



Figure 2. Height Adjustable Monitor.



Figure 3. K57 Monitor with an Ergonomic Arm.



Figure 4. K57 14.5' XGA Swivel Base Monitor.

K57 FlatScreen Components

The K57 FlatScreen components are depicted in the figure below.

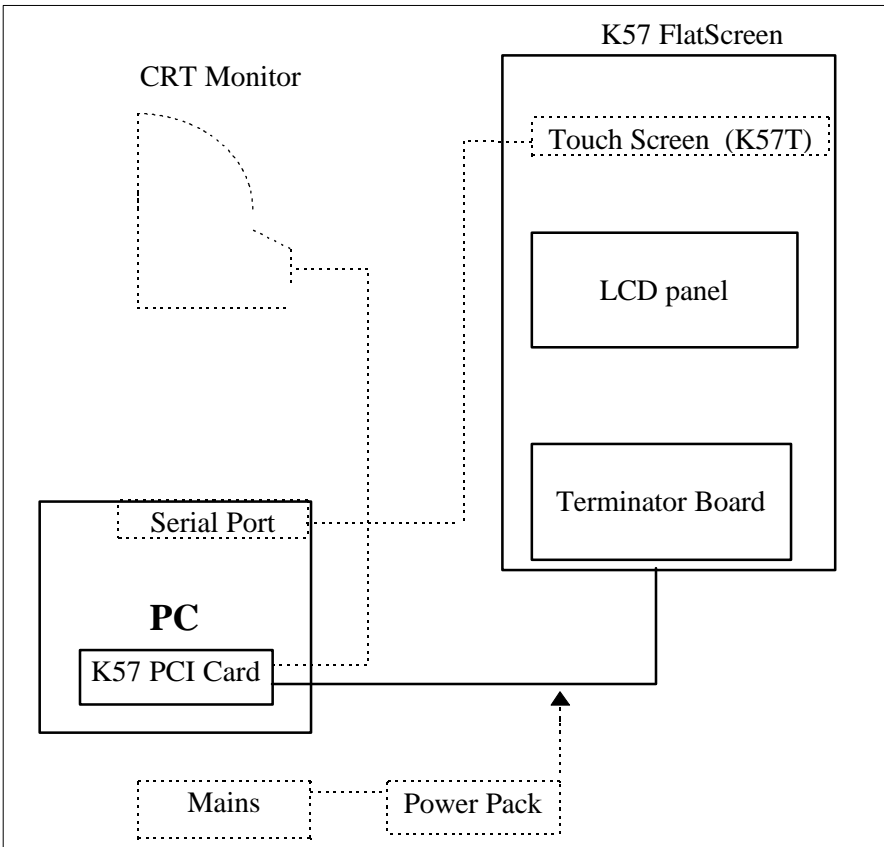


Figure 5. K57 Component Layout.

Note: The power pack is only required for the high brightness 14.5' XGA FlatScreen. The CRT is optional and is not supplied by Keycorp. The CRT interface of the K57 PCI card is not activated by default. (Refer to *Analogue CRT Interface* section on the following page).

K57 PCI Card

This card is the 'brain' of the K57 FlatScreens and provides the interface between the PC and the FlatScreen.

The 32-bit PCI controller card can be inserted into any spare PCI slot of the PC. The board does not require any special configuration and can be inserted directly into the PC.

LCD Panel

The LCD panel is the key element of the K57 FlatScreen. The panel uses Thin Film Transistor (TFT) technology. The SVGA version has 800 x 600 pixels while the XGA version has 1024 x 768 pixels.

FlatScreen Terminator Board

The primary function of the FlatScreen terminator board is to generate the control signals and voltages for the LCD panel. The board also controls the sequencing of power and data to the panel.

Analogue CRT Interface

The analogue CRT interface is the standard interface provided by all video cards. It supports all standard VGA modes in addition to some extended modes. By default, this interface is not activated. The interface can be activated by running 'ct.com' or 'sm.com' provided on the K57 utilities disk.

Note:

- ct.com is used to turn on the CRT output of the video card. This automatically turns off the FlatScreen interface.
- sm.com is used to activate both the CRT and FlatScreen interfaces simultaneously. The same image appears on both screens.
- fp.com is used to turn the FlatScreen interface only on. It turns the CRT off.

- The '.com' files can be added to the autoexec.bat file of the PC. This activates the required interfaces automatically when the PC is turned on. (If none of these statements are in the autoexec.bat file, then only the FlatScreen interface is activated by default).
- Under Windows 3.1, a program item called 'Chips' appears in the Control Panel program group. This program item (when launched) allows the user to change the settings listed above.

Power Pack

The power pack is only required for the 14.5' XGA high brightness monitor.

Installing the K57

In this Chapter

- Equipment Checklist
- Installing the K57 PCI Card in your PC
- Installing Operating System Drivers for the K57

Equipment Checklist

The following equipment is supplied with the K57 Colour FlatScreen:

- 1 x K57 FlatScreen
- 1 x PCI Controller Card
- 1 x K57 FlatScreen User Guide (this booklet)
- 1 x K57 Windows Family Driver Disk (903-MM-0060)
- 1 x K57 Drivers OS/2 V2.1 and V3.0 (903-MM-0069)
- 1 x K57 Utilities Disk (903-MM-0067)
- 1 x K57T TouchScreen Driver Disk (or MonitorMouse) (K57T only)

Installing the K57 PCI Card in your PC

To install the PCI card follow the steps in the Table below.

Caution
Hold the K57 PCI card by its bracket or outer edges at all times.
DO NOT TOUCH THE GOLD EDGE CONNECTOR.

Table 0-1. Installing the K57 PCI Card.

Step	Action
1	Ground yourself by touching the case of the PC before touching the K57 PCI card.
2	Power off the PC and unplug the mains cable from the wall outlet.
3	Open the case of the PC by removing the appropriate screws.
4	If necessary, disable the on-board VGA capability of the PC. (Refer to your respective PC manual). In addition, a jumper or switch setting on the motherboard may need to be altered.
5	Remove any video adapter cards currently in the PC.
6	Insert the K57 PCI controller card into any spare PCI slot on the motherboard. Secure it to the PC frame using the screw supplied with the PC.
7	Close the PC and secure all case screws.
8	Connect the K57 cable to the controller card.
9	For the K57T, connect the second cable to the serial port of the PC. (Note: whether it is COM1 or COM2)
10	Reconnect the mains cable to the wall outlet and power on the PC.

Installing Operating System Drivers for the K57

DOS

The K57 FlatScreens do not require special drivers to work in DOS modes.

Installing TouchScreen Driver for DOS (K57T only)

To install TouchScreen Driver for DOS follow the steps in the table below.

Step	Action
1	Check that the second (thin) cable of K57T FlatScreen is connected to the serial port of the PC (make a note if it is COM1 or COM2) and insert the TouchScreen Driver for DOS/Win3.1 disk in disk drive A:
2	From the DOS prompt, type A: and press Enter.
3	Type INSTALL and press Enter. This starts the installation process.
4	When prompted, press Enter until INSTALLING THE TOUCHSCREEN DRIVERS appears. Choose DOS EXPRESS INSTALLATION, press Enter.
5	Select SERIAL. Select the COM port which your touch screen cable is connected to (COM1 or COM2). Watch the files installing, and note the message "Type GO to calibrate touch screen" just before the installation quits back to the DOS prompt.
6	You are now in the newly created TOUCH directory. From the DOS prompt, type GO and press ENTER. You will be prompted to calibrate touch screen for a few text video modes. Touch the crosshair targets as asked. Complete the procedure.
7	You are prompted to reboot your computer. Reboot the PC in a usual way. (Don't forget to remove the floppy disk from the disk drive)
8	Now, every time you start the computer, the touch screen driver loads automatically from Autoexec.bat The installation is complete. Note: to calibrate the touch screen again, you should change to C:\TOUCH directory, and from there start ELOCALIB file.

Windows 3.1x

To install the operating system driver for Windows 3.1x follow the steps in the Table below.

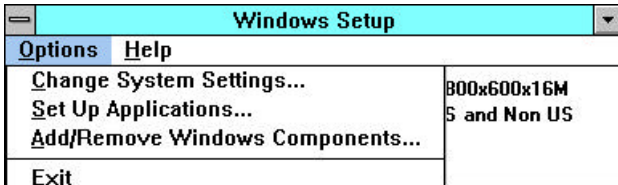

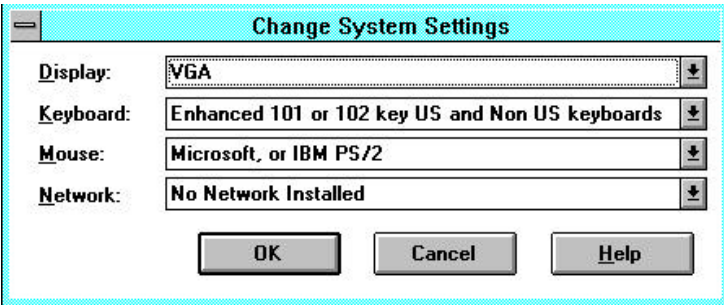
Step	Action
1	Exit to DOS from Windows to run the driver installation program.
2	Place the K57 family driver diskette in drive A.
3	Type in the following command to change to 'drive A': <code>\>a: <Enter></code>
4	Type in the following command to change to the WIN31X subdirectory on 'drive A': <code>\>cd win31x <Enter></code>
5	Type in the following command to run the driver setup program for Windows 3.1x: <code>\WIN31x>setup <Enter></code>
6	Follow the prompts on the screen to complete the driver installation.
7	Press the 'Esc' key to exit to DOS when installation is complete.

Driver Resolutions Supported

The following is a list of the driver resolutions supported by the K57 family under Windows 3.1x:

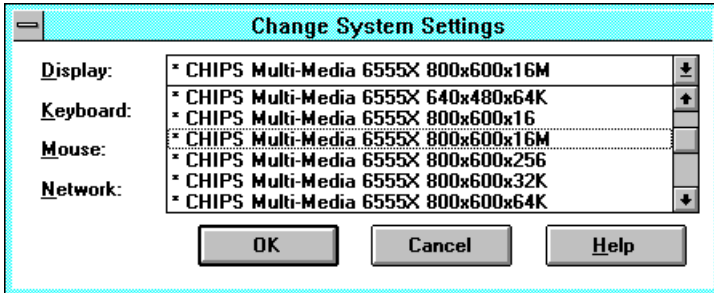
- CHIPS Multi-Media 6555x 1024 x 768 x 16
- CHIPS Multi-Media 6555x 1024 x 768 x 256
- CHIPS Multi-Media 6555x 1024 x 768 x 32K
- CHIPS Multi-Media 6555x 1024 x 768 x 64K
- CHIPS Multi-Media 6555x 640 x 480 x 16
- CHIPS Multi-Media 6555x 640 x 480 x 16M
- CHIPS Multi-Media 6555x 640 x 480 x 256
- CHIPS Multi-Media 6555x 640 x 480 x 32K
- CHIPS Multi-Media 6555x 640 x 480 x 64K
- CHIPS Multi-Media 6555x 800 x 600 x 16
- CHIPS Multi-Media 6555x 800 x 600 x 16M
- CHIPS Multi-Media 6555x 800 x 600 x 256
- CHIPS Multi-Media 6555x 800 x 600 x 32K
- CHIPS Multi-Media 6555x 800 x 600 x 64K

To change the driver resolution follow the steps in the table on the following page.

Step	Action
1	Enter Windows by typing the following command C:\>win then press the Enter key.
2	Open the Program Manager dialog box.
3	Double-click the Windows Setup icon.
4	<p>Inside the Windows Setup dialog box, select Options, Change System Settings.</p> 
5	<p>Inside the Change System Settings dialog box, click the  arrow on the Display drop-down list.</p> 

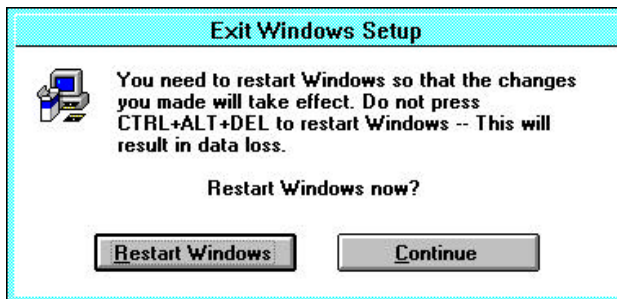
Steps continue.

- 6 Click on the appropriate resolution. To view all the listed options use the up or down arrow, or drag the scroll bar up or down. Once the resolution is selected, click the **OK** button.



- 7 Click the **Current** button to use currently installed driver.

- 8 Click the **Restart Windows** button to complete the changes.



Installing TouchScreen Driver for Win3.1x (K57T only)

To install TouchScreen Driver for Win3.1x follow the steps in the table below.

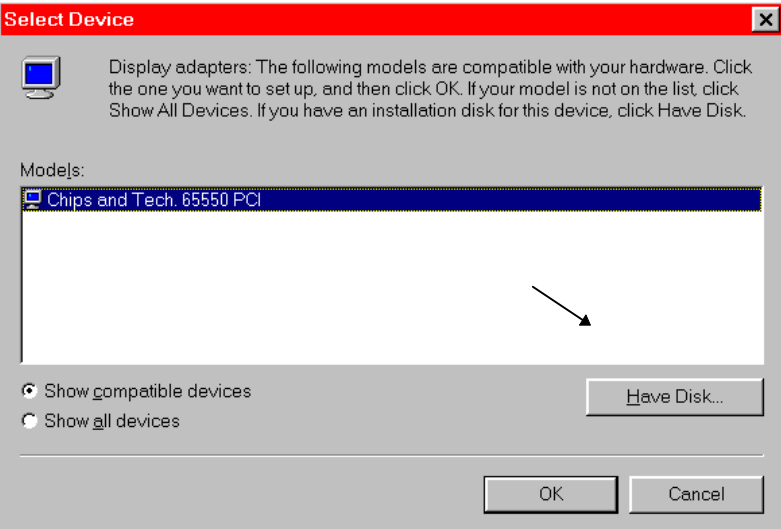
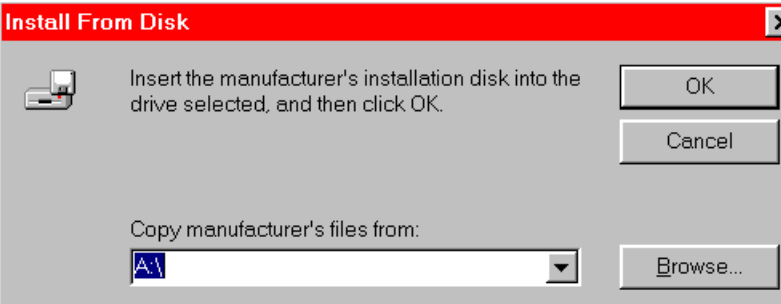
Step	Action
1	Check the second (thin) cable of the K57T FlatScreen is connected to the serial port of the PC (make a note if it is COM1 or COM2) and insert the TouchScreen Driver for DOS/Win3.1x disk in disk drive A:
2	From the DOS prompt, type A: and press Enter.
3	Type INSTALL and press Enter. This will start the installation process.
4	When prompted, press Enter until INSTALLING THE TOUCHSCREEN DRIVERS appears. Choose WINDOWS EXPRESS INSTALLATION, press Enter.
5	Select SERIAL, then the COM port which your touch screen cable is connected to (COM1 or COM2). Watch the files installing, and note the message "Type GO to calibrate touch screen" just before the installation quits back to the DOS prompt
6	Note: The directory named TOUCH has been created, and you are in it now. From the DOS prompt, type GO and press ENTER. You are prompted to calibrate the touch screen for a few text video modes. Touch the crosshair targets as asked. Then Windows starts automatically and you are prompted to do the calibration for Windows. Complete the procedure.
7	Reboot the PC in the usual way. (Don't forget to remove the floppy disk from the disk drive)
8	Now every time you start the computer, the touch screen driver loads automatically from Autoexec.bat. The installation is complete. Note: the additional icon TOUCH SCREEN has been added to Control Panel.. To calibrate the touch screen again, you should double click on it, then click on CALIBRATE>>... and repeat the calibration procedure described above.

Windows 95

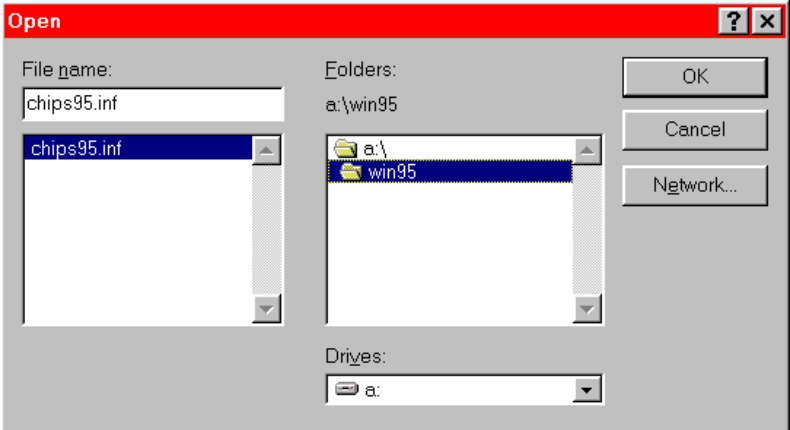
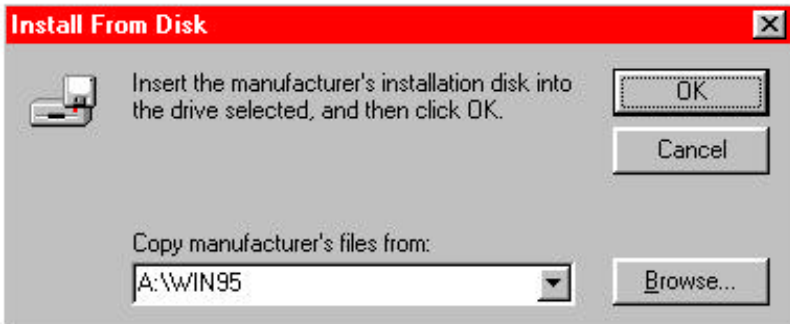
To install the K57 display driver for Windows 95, follow the steps in the table below.

Step	Action
1	Click the Start button.
2	Select Settings, Control Panel .
3	Double click on the Display icon.
4	Click the Settings tab in top right hand corner of the 'Display Properties' dialog box.
5	Click the Change Display Type button.
6	Click the Change button next to the 'Adapter Type' list. <div></div>

Steps continue.

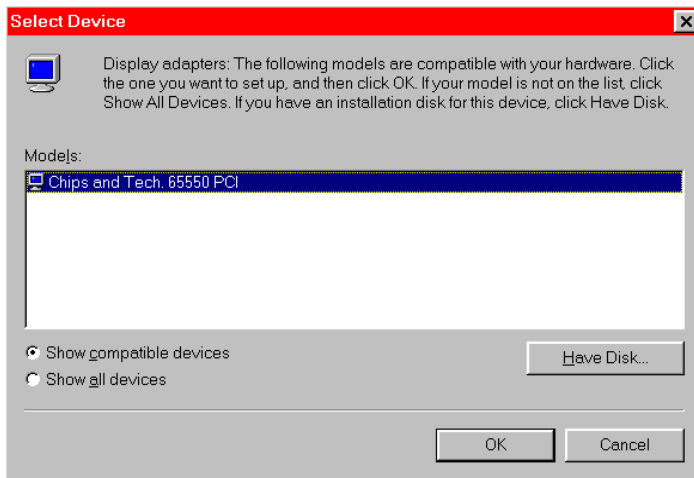
7	<p>Click the Have Disk... button.</p> 
8	<p>Click the Browse button, inside the 'Install From Disk' dialog box.</p> 

Steps continue.

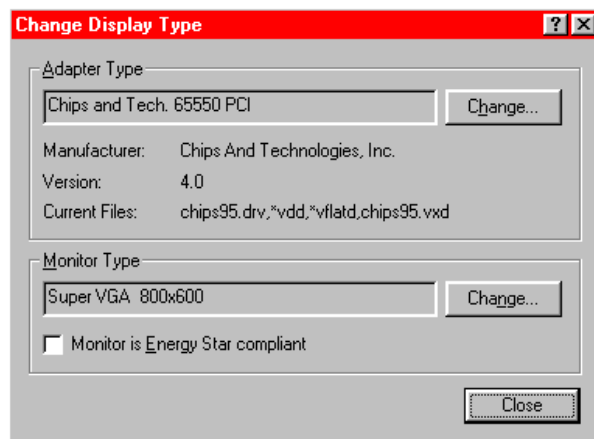
9	<p>The 'Open' dialog box appears. Use the 'Drives' drop-down list and the 'Folders' list box to select the Win95 subdirectory on drive A. The file chips95.inf automatically appears in the 'File name' list. Click the OK button.</p> 
10	<p>Click the OK button in the 'Install From Disk' dialog box.</p> 

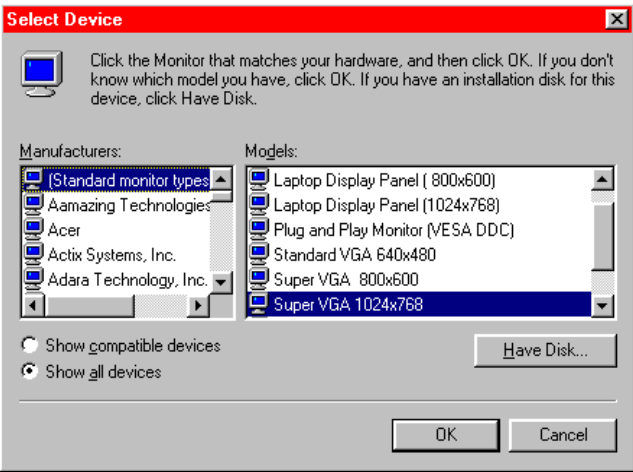
Steps continue.

- 11 **Chips and Tech. 65550 PCI** is displayed in the 'Select Device' Dialog box. Click the **OK** button.



- 12 The 'Change Display Type' dialog box appears with 'Chips and Tech. 65550 PCI' shown in the 'Adapter Type' list. Click the 'Monitor Type', **Change** button.



13	<p>The 'Select Device' dialog box appears. Click the Show all devices button.</p> 
14	<p>Inside the 'Select Device' dialog box (shown above), click the up or down arrow, or drag scroll bar up or down to choose the required model in the Models drop-down list. Then click the OK button.</p> <p>Note: To have full screen display, the monitor type selected should match the resolution of your K57:</p> <ul style="list-style-type: none"> • For the K57 10.4' SVGA and K57 12.1' SVGA FlatScreen monitors, the suggested monitor type is Super VGA 800 x 600. • For the K57 14.5' XGA flat screen monitor, the suggested monitor type is Super VGA 1024 x 768. <p>If the resolution of the selected 'monitor type' is smaller than the actual resolution of the particular K57, (e.g. Super VGA 800 x 600 for the K57 14.5' XGA variant), then all images are displayed as a window of active pixels, centred with a black border.</p>
15	Click the Close button to exit 'Change Display Type' dialog box.
16	Click the Close button to exit the 'Display Properties' dialog box.
17	Click the Yes button inside 'System Setting Change' dialog box to restart your computer.

Driver Resolutions Supported

For SVGA variants of the K57, the supported driver resolutions are listed below:

- 640 x 480 x 16
- 640 x 480 x 256
- 640 x 480 x 64K
- 640 x 480 x 16M
- 800 x 600 x 16
- 800 x 600 x 256
- 800 x 600 x 64K
- 800 x 600 X 16M

For XGA variants of the K57, the supported driver resolutions are listed below:

- 1024 x 768 x 16
- 1024 x 768 x 64K
- plus all the resolutions listed for SVGA variants above except 800 x 600 x 16M.

To change the driver resolution, follow the steps below:

Step	Action
1	Follow steps 1 through 5 described in the installation procedure beginning on page 15.
2	Use the 'Desktop area' list and drop-down 'colour palette' list to choose the desired resolution and colour palette.
3	Click the OK button to finish.
4	Click the Yes button in the 'System Settings Change' dialog box to restart computer again.

Installing MonitorMouse for Win95/98 (K57T only)

MonitorMouse™ is software that allows operation of a touch screen in parallel with a mouse. The user can operate the mouse cursor either by moving the mouse (as per usual) or simply by touching the screen.

To install MonitorMouse for Win95/98 follow the steps in the table below.

Step	Action
1	Check the second (thin) cable of the K57T FlatScreen is connected to the serial port of the PC (make a note if it is COM1 or COM2) and insert the MonitorMouse disk for Win95 in disk drive A:
2	Click on START button, then select RUN .
3	When the RUN dialog box appears, type A:\SETUP and click the OK button. This starts the installation process.
4	When prompted, click YES-> OK-> NEXT-> buttons until the SELECT DEVICE window appears
5	<p>In the SELECT DEVICE window, select the following:</p> <p>If the K57T second (thin) cable is connected to COM1, select: ELO 2310, 2210, or 2300 Smart Set Serial Controller on COM1</p> <p>If the K57T second (thin) cable is connected to COM2, select: ELO 2310, 2210, or 2300 Smart Set Serial Controller on COM2</p> <p>Click OK.</p>
6	You are prompted to reboot your computer. Click OK . (Don't forget to remove the floppy disk from the disk drive)
7	When the computer restarts after the installation, you are prompted to calibrate the touch screen by touching 3 targets on the screen. Do it accurately, and answer YES when asked "Does the cursor jump to your fingertip?"

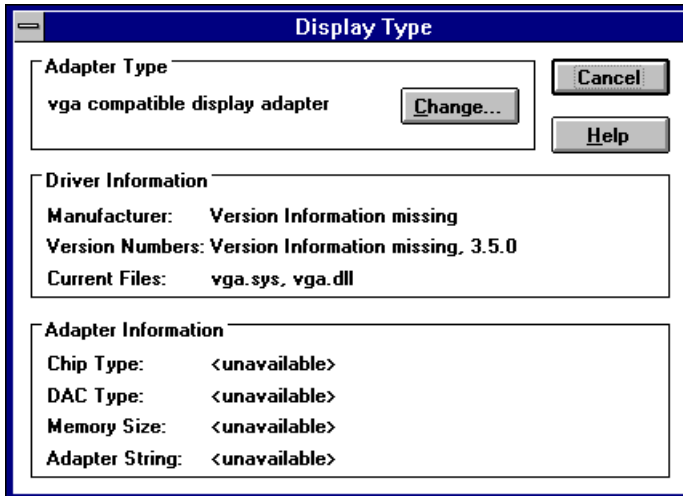
steps continue.

8	<p>The installation is now complete. Note: the additional icon called ELO TOUCHSCREEN has been installed in your Control Panel.</p> <p>(START -> SETTINGS -> CONTROL PANEL -> ELO TOUCHSCREEN)</p> <p>From there, you can change the setting of your touch screen (for example, if you connect it to the different serial port) and, also, you can calibrate your touch screen at any time.</p>
---	--

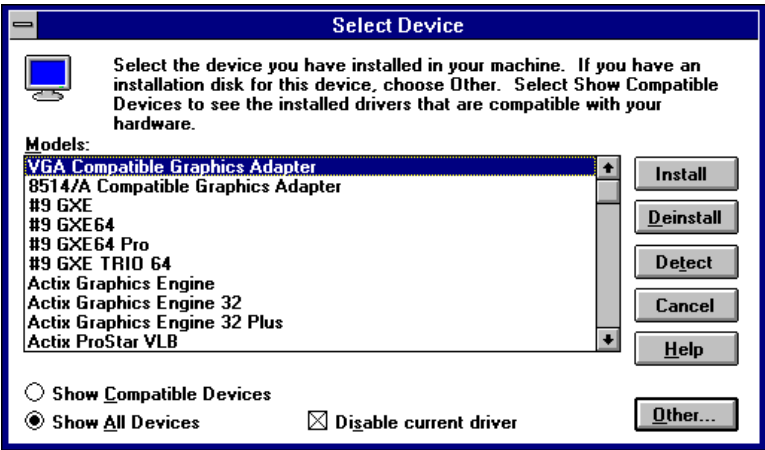
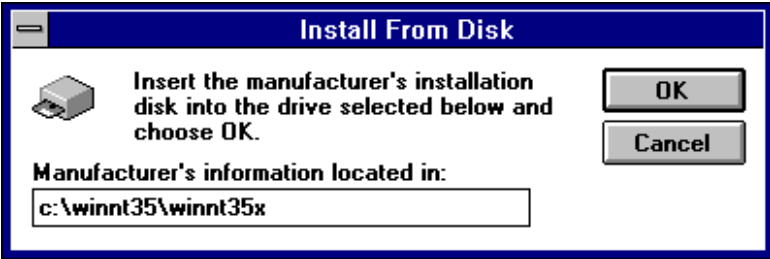
Windows NT 3.51

Log on to Windows NT 3.51 and follow the steps in the table below to install the display driver.

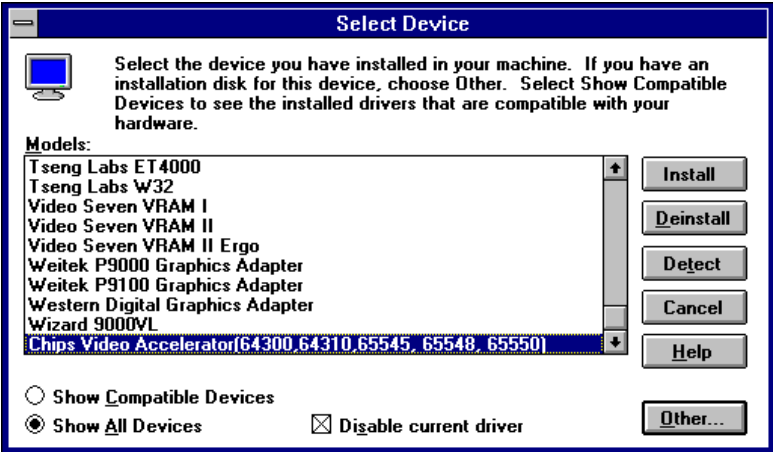
Step	Action
1	Place the K57 'Windows Family' driver diskette into drive A.
2	Use the File Manager to copy the whole subdirectory WINN35X from drive A to a temporary storage point on the 'C:' drive.
3	Open the Program Manager [Main] dialog box.
4	Double-click the Control Panel icon.
5	Double-click the Display icon inside the 'Control Panel' dialog box.
6	Click the Change Display Type... button inside the 'Display Settings' dialog box.
7	Click the Change... button inside the 'Display Type' dialog box.



Steps continue.

8	<p>Click the Other... button inside the 'Select Device' dialog box.</p> 
9	<p>Type the path name of the WINN35X files on drive C (your temporary storage location). Click the OK button inside the 'Install From Disk dialog box'.</p> 

Steps continue.

10	<p>In the 'Models' drop-down list, Chips Video Accelerator (64300,64310,65545,65548,65550) is shown. Click the Install button inside the 'Select Drive' dialog box.</p> 
11	Follow the prompts on the screen to complete the installation.

Driver Resolutions Supported

For SVGA variants of the K57, the supported driver resolutions are listed below:

- 640 x 480 x 256
- 640 x 480 x 64K
- 800 x 600 x 256
- 800 x 600 x 64K

For XGA variants of the K57, the supported driver resolutions are listed below:

- 1024 x 768 x 16
- 1024 x 768 x 64K
- plus all the resolutions listed for SVGA variants above except 800 x 600 x 16M.

To change the driver resolution, follow the step in the table below.

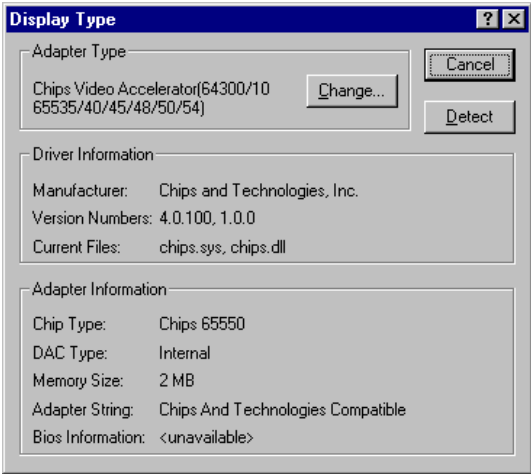
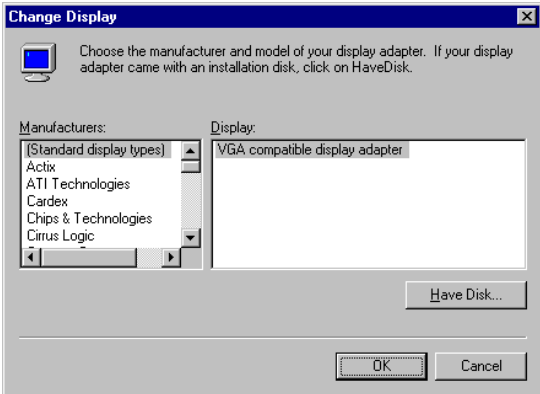
Step	Action
1	Follow steps 1 to 5 as shown in the installation procedure above.
2	Click on the left or right arrow in the Desktop Area to increase or decrease resolution, or drag the scroll box left or right. Then click OK button inside 'Display Settings' dialog box.
3	Follow the prompts on the screen to complete the installation.

Installing “MonitorMouse for WinNT” (K57T only)

Currently the WinNT3.51 and WinNT4.0 use the same driver (Driver Version 2.0), if this is still the case please refer to the WinNT section for the installation procedure.

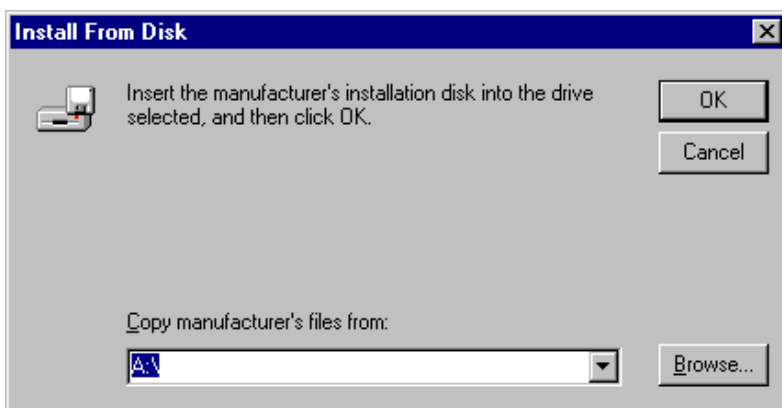
Windows NT 4.0

Log on to Windows NT 4.0 and follow the steps below to install the K57 display drivers.

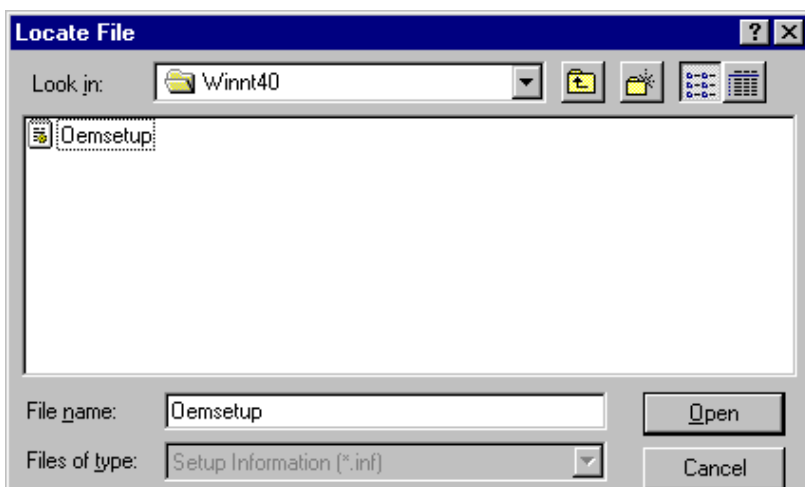
Step	Action
1	Follow steps 1 to 5 of the Windows 95 drivers.
2	Click the Change button inside the 'Display Type' dialog box.
	
3	Click the Have Disk... button.
	

Steps continue.

- 4 Click the **Browse** button inside the 'Install From Disk' dialog box and insert the driver diskette in drive A.

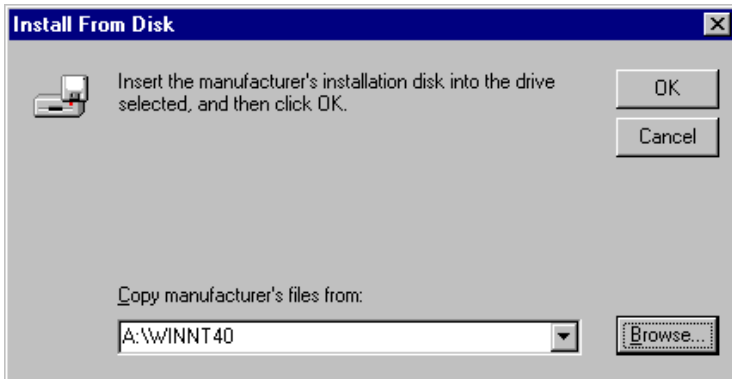


- 5 Select the **Winnt40** folder, **Oemsetup** is displayed in the 'File Name' list. Click the **Open** button inside the 'Locate File' dialog box.

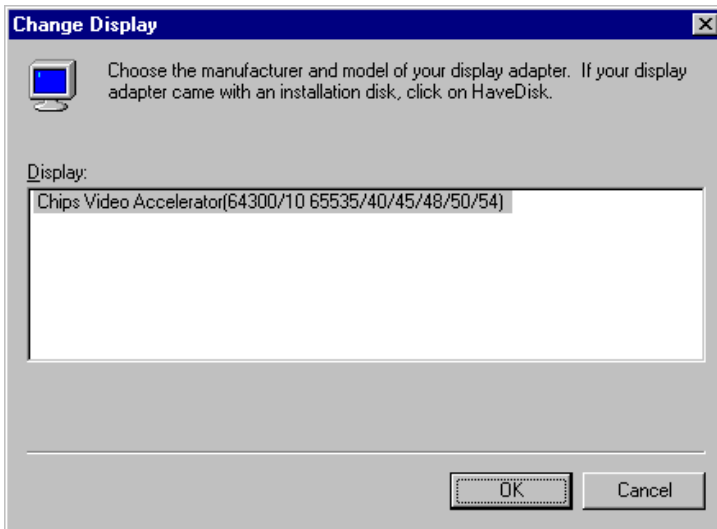


Steps continue.

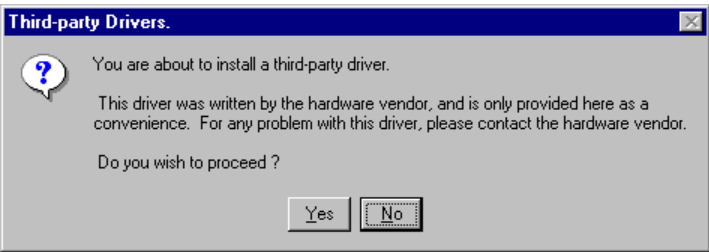
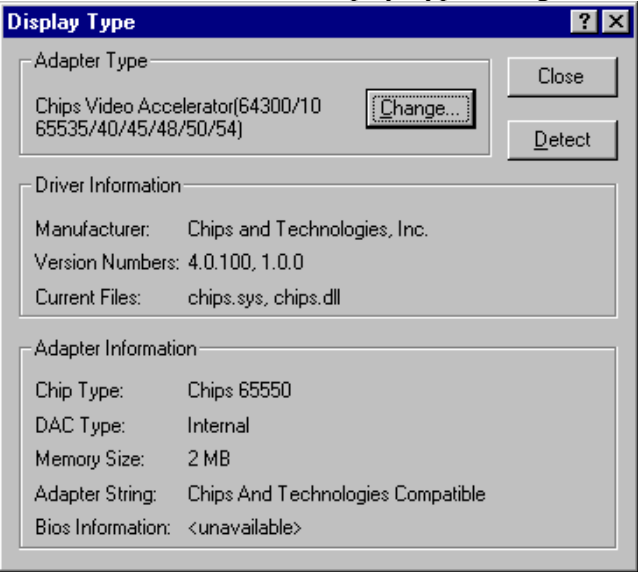
- 6 Inside the 'Install From Disk' dialog box, **A:\WINNT40** appears in the 'Copy Manufacturer's Files From' list. Click the **OK** button.



- 7 The 'Change Display' dialog box appears again, with **Chips Video Accelerator (64300/10 65535/40/45/48/50/54)** in the 'Display' list. Click the **OK** button.



Steps continue.

8	<p>Click the Yes button inside the 'Third-party Drivers' dialog box.</p> 
9	<p>After the installation program has copied the files from driver diskette to the hard drive, click the OK button inside the 'Installing Driver' dialog box.</p>
10	<p>Click the Close button inside the 'Display Type' dialog box.</p> 
11	<p>To complete the installation procedure, click the Close button.</p>
12	<p>If you want to change the resolution and colour of the driver in use, move the pointers in the 'Desktop Area' list and the 'Color Palette' drop-down list inside 'Display Properties' dialog box.</p>

Driver Resolutions Supported

For SVGA variants of the K57, the supported driver resolutions are listed below:

- 640 x 480 x 256
- 640 x 480 x 64K
- 800 x 600 x 256
- 800 x 600 x 64K

For XGA variants of the K57, the supported driver resolutions are listed below:

- 1024 x 768 x 256
- 1024 x 768 x 64K
- plus all resolutions in SVGA mode.

The procedure to change the driver resolution is very similar to that for Windows 95. Please refer to that section of this guide.

Installing MonitorMouse for WinNT (K57T only)

MonitorMouse™ is a software that allows operation of a touch screen in parallel with a mouse. The user can operate the mouse cursor either by moving the mouse (as per usual) or simply by touching the screen.

To install MonitorMouse for WinNT follow the steps in the table below.

Step	Action
1	Check the second (thin) cable of the K57T FlatScreen is connected to the serial port of the PC (make a note if it is COM1 or COM2) and insert the MonitorMouse disk for WinNT in disk drive A:
2	Click START button, select RUN . (WinNT3.51 users: select File -> Run from Program Manager)
3	When the RUN dialog box appears, type A:\SETUP and click OK . This starts the installation process.
4	When prompted, click YES> OK> NEXT> buttons until the TOUCHSCREEN SETUP window appears.

Steps continue.

5	<p>In the TOUCHSCREEN SETUP window, select the following:</p> <p>Controller type: Serial, Smart Set</p> <p>Com port: COM1 or COM2 (what the cable is connected to)</p> <p>Language: select the language of your preference.</p> <p>Click OK.</p>
6	<p>Restart your PC (RUN -> Shut Down -> Restart).</p> <p>(Don't forget to remove the floppy disk from the disk drive)</p>
7	<p>The installation is now complete. Note: the additional icon called ELO TOUCHSCREEN has been installed in your Control Panel. (START -> SETTINGS -> CONTROL PANEL -> ELO TOUCHSCREEN)</p> <p>From there, you can change the setting of your touch screen (for example, if you connect it to the different serial port) and, more important, you can calibrate your touch screen.</p>
8	<p>To calibrate the touch screen start ELO TOUCHSCREEN from the CONTROL PANEL (see above), then click CALIBRATE...>> button. You are prompted to calibrate the touch screen by touching 3 targets on the screen. Do it accurately, and answer YES when asked "Does the cursor jump to your fingertip?". The calibration is now complete.</p>

OS2

Refer to the 'readme.txt' file on the driver diskette 'K57 Drivers for OS/2 V2.1 and OS/2 V3.0.'

Driver Resolution Supported

Refer to the 'readme.txt' file on the driver diskette 'K57 Drivers for OS/2 V2.1 and OS/2 V3.0.'

K57T ONLY - Sorry, there is no touch screen support for OS/2.

For latest information, please contact your nearest Keycorp representative.

Using the K57 FlatScreens

The diagram below illustrates the K57H FlatScreen.



Figure 6. K57 Control Locations.

The **LED** indicates when the K57 is receiving power.

The **brightness control** is located beneath the bottom right edge of the screen. To adjust slide the control to obtain the desired brightness.

The vertical **viewing angle** adjusts by holding the monitor by the sides and tilting. The screen tilts to a maximum of 45° backwards and 15° forwards.

The **viewing height** of the monitor adjusts by place one hand on the base and with your other hand lift the monitor up or down.

Using the K57 Utilities

CT

The utility 'ct.com' is used to turn on the CRT output of the video card. This automatically turns off the FlatScreen interface.

SM

The utility 'sm.com' is used to activate both the CRT and FlatScreen interfaces simultaneously. The same image appears on both screens.

FP

The utility 'fp.com' is used to turn the FlatScreen interface only on. It turns the CRT off.

Note:

These '.com' files can be added to the autoexec.bat file of the PC. This activates the required interfaces automatically when the PC is turned on. (If none of these statements is in the autoexec.bat file, then only the FlatScreen interface is activated (default)).

Specifications

	K57H-1221	K57E-1221	K57H1223	K57S-1236
Screen size:	10.4'	10.4'	12.1'	14.5'
Housing Style:	Height adjustable	Ergonomic arm	Height adjustable	Standard desktop
Display Resolution:	SVGA (800 x 600)	SVGA (800 x 600)	SVGA (800 x 600)	XGA (1024 x 768)
Display modes:	SVGA, VGA, DOS text	SVGA, VGA, DOS text	SVGA, VGA, DOS text	XGA ,SVGA, VGA, DOS text
Brightness	70cd/m ²	70cd/m ²	70cd/m ²	150cd/m ²
Power Usage:				
active mode	<10W	<10W	<10W	<30W
sleep mode	<1.0W	<1.0W	<1.0W	<1.0W
Height:	308 to 398mm	496 to 713mm	317 to 407mm	320mm
Depth:	180mm	305 to 525mm	180mm	180mm
Width:	325mm	325mm	325mm	395mm
Weight:	2.7kg	2.9kg	3.4kg	4.5kg
Rotation range:	180° left and right	32° left and right	180° left and right	180° left and right
Screen tilt:	45° up, 15° down	45° up, 20° down	45° up, 15° down	45° up, 15° down

Troubleshooting

If the K57 FlatScreen does not display an image correctly, check that:

Table 0-1 Troubleshooting Steps

Step	Check
1	The K57 cable is properly connected to the PCI controller card in the PC and all mains power connections are functioning.
2	The controller board is seated correctly within the 32-bit PCI expansion slot.
3	The on-board VGA has been disabled (if it exists).
4	There are no other VGA controller boards in any other PCI BUS slot.

Glossary

CCFL	Cold Cathode Fluorescent Lamp
CRT	Cathode Ray Tube
LCD	Liquid Crystal Display
LED	Light Emitting Diode
VGA	Video Graphics Array
SVGA	Super Video Graphics Array
XGA	Extended Video Graphics Array
TFT	Thin Film Transistor

Declaration of Conformity

UNISYS

Declaration of Conformity according to EN 45014

Representative's Name: Unisys Deutschland GmbH

Representative's Address: Am Unisys Park 1
D-65843 Sulzbach
Germany

Telephone: + 49 6196 99 1620
Telefax: + 49 6196 99 1414

declares that the product

Product Name: Flatscreen

Product Type: K57E-0xx for xx = 01 or 04
K57H-0xx for xx = 01 through 06 or 11

Supplier's Name: Keycorp Ltd

Supplier's Address: Level 9, 67 Albert Avenue
Chatswood, N.S.W. 2067
Australia

to which this declaration relates is in conformity with the following standards based on sample testing

European Standards: EN 50082-1:1992
EN 55022:1994
EN 60950

International Standards: CISPR 22:1993
IEC 801-2:1991
IEC 801-3:1984
IEC 801-4:1988
IEC 950:1991 with Amendments No.1:1992 and 2:1993

following the provisions of Directives 73/23/EEC as amended by 93/68/EEC
89/336/EEC as amended by 92/31/EEC and 93/68/EEC.

The product is also in conformance with International Standard ISO 9241-3:1992.

Supplementary Information:

The tests have been conducted in the labs of
- Canadian Standards Association in Etobicoke, Ontario/Canada (for product safety)
- EMC Technologies Pty Ltd in Castle Hill, N.S.W./Australia (for electromagnetic compatibility)
- TÜV Rheinland Product Safety GmbH in Köln, Germany (for visual display requirements).

Sulzbach 16 June 1997

Rolf Schäfer

Place

Date

Name

Signature

